

HOW CAN SOUTH AFRICA SCALE INNOVATIONS BY TAPPING EXPAT INTELLECT, RESOURCES + CONTACTS ABROAD?

DONOVAN NEALE-MAY

Managing Partner, The SABLE Accelerator

CEO of the Business Performance Innovation (BPI) Network

Executive Director of the Chief Marketing Officer (CMO) Council



Time To Turn The Brain Drain Into A Brain Gain



SABLE NETWORK™
Go Global with Trusted Guidance





SABLE NETWORK™
Go Global with Trusted Guidance

South Africa's Global Diaspora

An estimated 1.2 million South African citizens live abroad -- some of the best and the brightest in many fields of endeavor.

Ready. Willing. And Notably Able.



Time to Identify, Engage and Multiply Our Global Asset Base



“Many among those who have left the (African) continent are ready and willing either to return, or otherwise to make their skills available to promote development.”

**Former South African
President Thabo Mbeki**





SABLE NETWORK™
Go Global with Trusted Guidance

**Connecting Innovators
To Global Collaborators**

**Finding Global Markets for South
Africa's Intellect, Ideas and New
Venture Ingenuity**

What is SABLE?

A trusted knowledge network of well-placed and highly connected Global South Africans providing mentoring and consulting services to South African companies, entrepreneurs and institutions seeking to fund or commercialize innovation, as well as enter, grow, and partner in worldwide markets.



SABLE MODEL





SABLE NETWORK™
Go Global with Trusted Guidance

Strategic Areas of Focus

**Giving Emerging
Growth Companies:**

DIRECTION

CONNECTION

TRACTION



Current Partners



SABLE NETWORK™
Go Global with Trusted Guidance



SPECIAL INITIATIVES



Skills Center to Advance Localization Excellence in Africa

Global center of excellence at a South African university or research institution (e.g. CSIR) to assist multi-nationals with product localization for the African context.





SABLE NETWORK™
Go Global with Trusted Guidance



Technology Optimization Pipeline (TOP)

Source under-utilized or discarded intellectual property from VCs in the USA to commercialize at a fraction of the cost in SA using university, incubator, accelerator and research center talents.





South Africa
Technology **INNOVATION CENTER**



SABLE NETWORK™
Go Global with Trusted Guidance

Digital Bridge to SA Innovation Hubs

Digitally connected physical presence in Silicon Valley to facilitate live interaction, video programming (with Wits), technology transfer and deal making between SA innovators and potential commercial partners, investors, domain experts, mentors, collaborators and influencers in North America





Global Partner Match-Making

A joint venture with the Powerlinx cloud AI-based data platform to profile, match, and make business introductions for South African companies on a global level



Creation of a Global Innovation Ecosystem in partnership with UNICEF Innovation Centre to drive social entrepreneurship and crowdsource social impact technologies that can address global challenges

Home

f t in SIGN IN

ABOUT CHALLENGES INNOVATION ZONE PARTICIPATE

SUCCEED WHERE THERE'S A NEED™

CMO COUNCIL BPI NETWORK unicef INNOVATION CENTER

YOUR BRILLIANCE CAN MAKE A DIFFERENCE.
A Global Innovation Advocacy Campaign with UNICEF

Succeed Where There's a Need is a private sector initiative to engage the world's best and brightest technologists, researchers, entrepreneurs, academics and post-graduate students in a global innovation ecosystem. Innovators will contribute inventive technology solutions and collaborate with experts around the globe. The top solutions will be elected to help UNICEF scale its efforts to meet the ever-growing needs of the poorest and most vulnerable and excluded children across 190 countries.

LEARN HOW IT WORKS →

NEED

REGISTER TO PARTICIPATE IN OUR PROGRAM

NEW IDEAS?

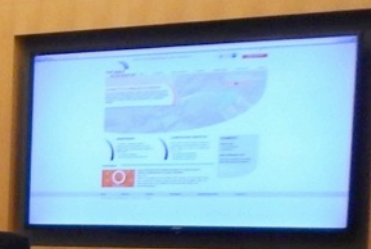
SUCCEED **aruta**

Can your technology help reach the last mile? Submit your idea and help us to realize the best ideas in East Africa.

DryBath™
A dry, ready-to-use, powdered, biodegradable, and biodegradable gel.
DryBath, 88% biodegradable



**THE SABLE
ACCELERATOR**TM
SOUTH AFRICAN BUSINESS LINK TO EXPERTS



**SABLE ADVISORY
PROJECTS**

Dynamic Food

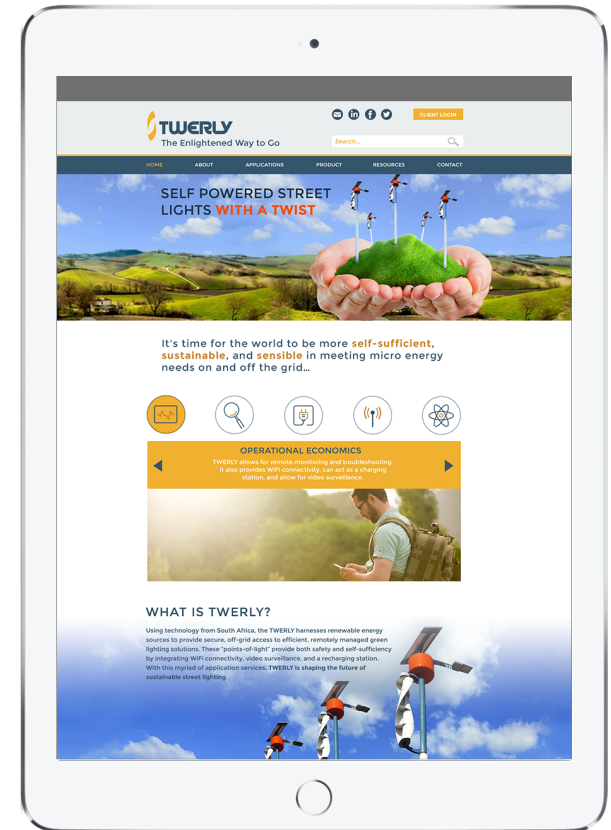
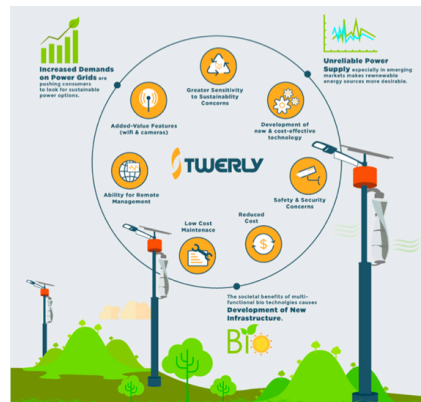
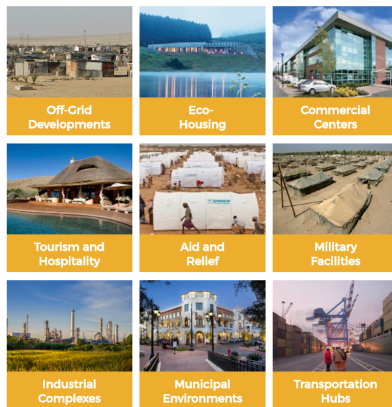
Advancing awareness of this award-winning South African frozen specialty foods innovator and sustainability leader which is poised to rapidly expand in the U.S. and other global markets





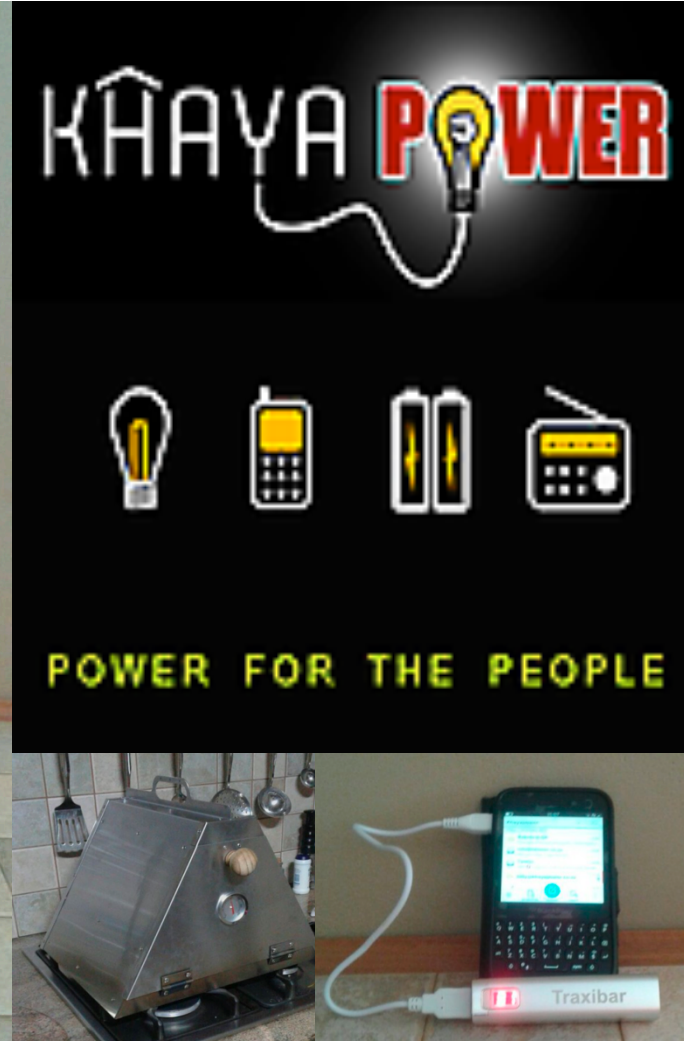
Self-Powered Street Lights

Undertook South African and Global market penetration strategy. Developed brand identity, technical brochures and website to demonstrate the value of sustainable streetlighting and WiFi solutions.





SABLE NETWORK™
Go Global with Trusted Guidance



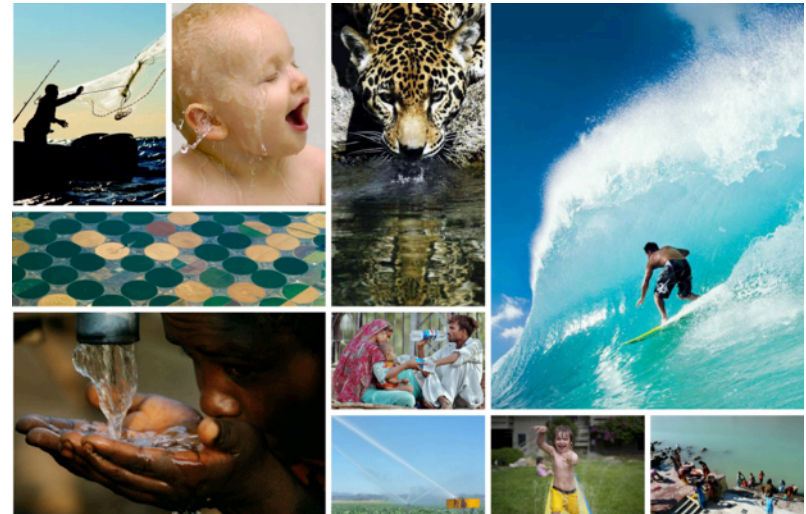


SABLE NETWORK™
Go Global with Trusted Guidance






SABLE NETWORK™
Go Global with Trusted Guidance





Undertaking North American research and CEO recruitment project for this leading global provider of vehicle fleet management and insurance telematics.





Advance awareness of luxury brand of sustainable Nile Crocodile handbags, including global market penetration strategy.





Cross-industry promotional marketing and merchandising campaign to drive trade display, sale and consumption of South African agricultural products in Asia and the Middle East.



SABLE NETWORK™
Go Global with Trusted Guidance

Plumbelievable revitalising fruit

Plums are perfect body revitalisers and protectors. Packed with vitamins A, C and E, Potassium and Carotene, they're also rich in anti-oxidant and free radical-neutralising Quercetin, Antho-cyanins and Phenols, which can help reduce ageing and even combat the development of diseases like cancer.

... And when they're Taste South Africa Plums, they come with extra goodness in every bite. Not only do they originate from the world famous stone fruit growing Western Cape region, they're also grown to strictest standards of environmental, ethical cultivation and globally recognised fruit-growing science.

Look out for Taste South Africa Plum varieties at Spinneys like: Letitia, Fortune, African Delight and Angelino. Each has its own unique flavour, bite and character - from heavenly sweet to mildly tangy, from lightly crisp to lusciously juicy.



WIN a rejuvenating 5-day Holiday for two to the heart and soil of South Africa's beautiful Western Cape.

It includes excursions to legendary Table Mountain, Cape Point and the Cape Winelands, game viewing at a premier game lodge, accommodation, return flights to Dubai/Cape Town, spending money ... and more!

To find out more, visit www.spinneys-dubai.com

All of the best from our heart and soil!



SABLE SUCCESS IN CROSS- POLLINATING POTENTIAL PARTNERS





SABLE NETWORK™
Go Global with Trusted Guidance

Development of Integrated Vehicle Management System to deliver a MiFARE Smartphone App as part of a cashless fare and operational safety solution for taxi operators (serving 15 million taxi commuters a day) in South Africa.



ANDROID BUSINESS-READY SOLUTION



FX 100+



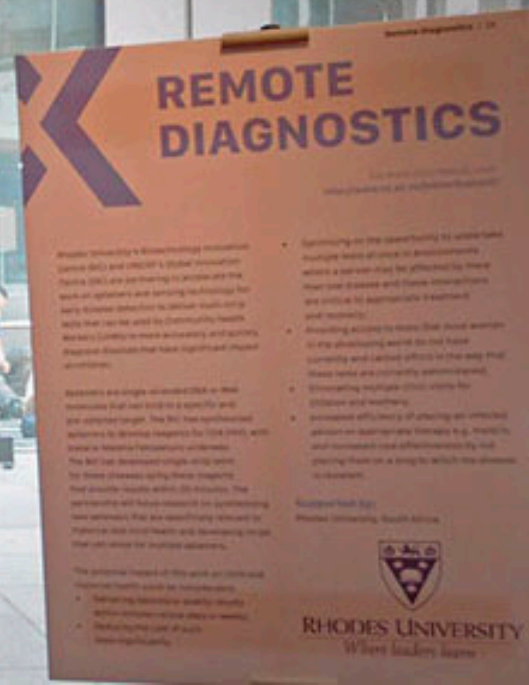
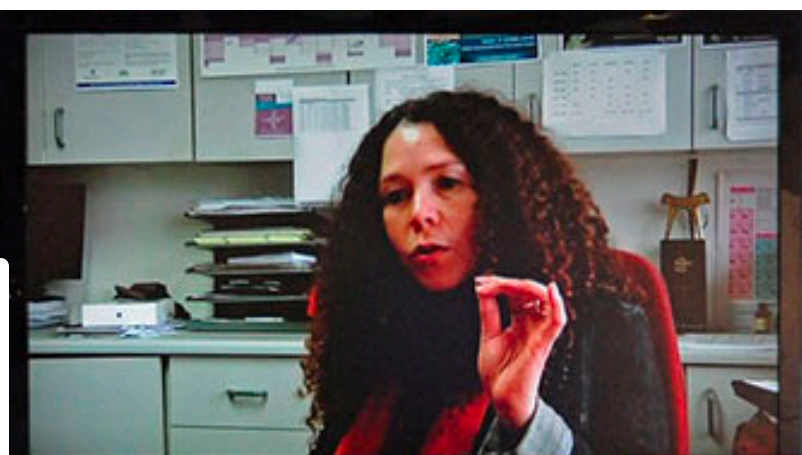
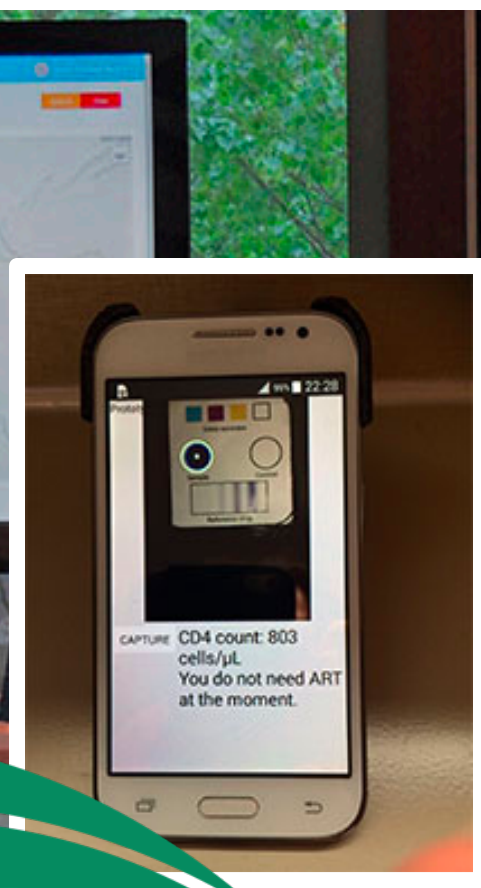
FX 200



FX 300

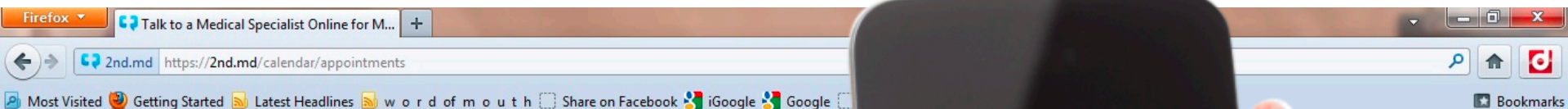


SABLE NETWORK™
Go Global with Trusted Guidance





SABLE NETWORK™
Go Global with Trusted Guidance



2nd.MD
(beta)
Easy Online Access to Leading Doctors

HOME

ACCOUNT

APPOINTMENTS

MY DOCTORS

Appointments

View

History

System T

Current time: 09:41 AM Mon, 12/05/2011 [autodetected]

New Appointments

Dr. Boris Zaks (Video session)

Monday, 12/05/2011
10:00 AM to 10:20 AM

About Us

Press Room

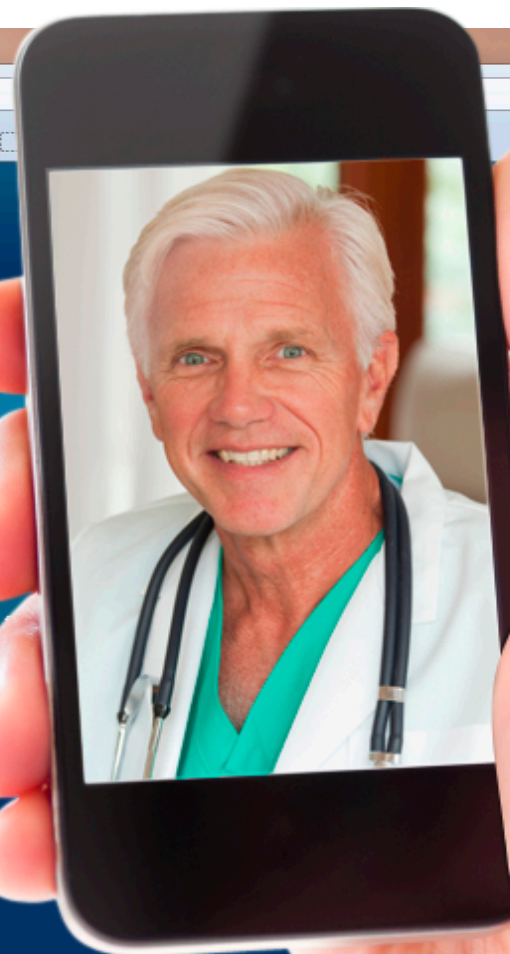
Privacy Policy

Terms of Use

FAQ



ws2.2nd.md





SABLE NETWORK™

Go Global with Trusted Guidance

Contact:

Donovan Neale-May

donovan@sablenetwork.com

1.408.677.5333 (o) or 1.650.222.5260 (m)